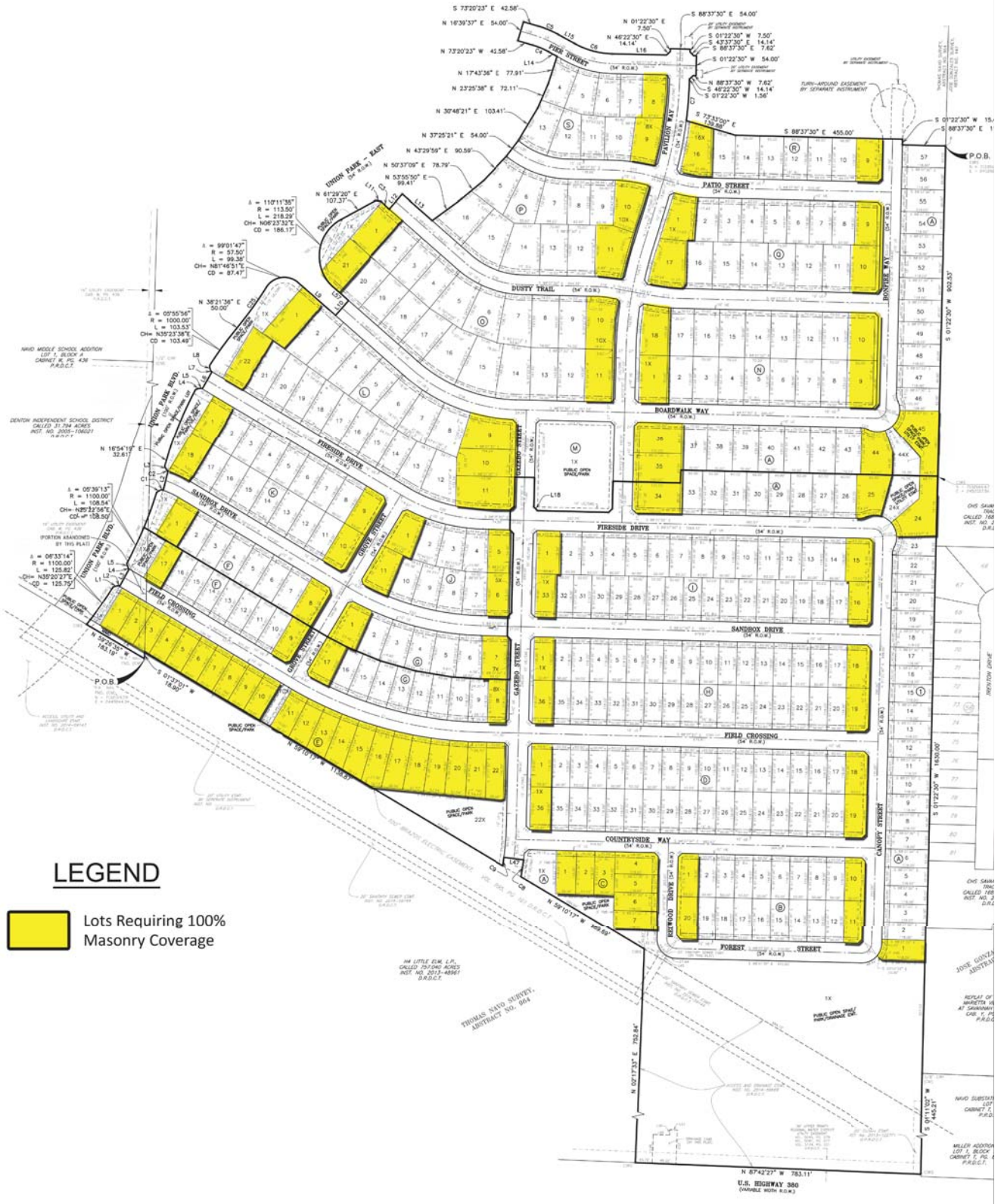


EXHIBIT A

Designated Masonry Lots



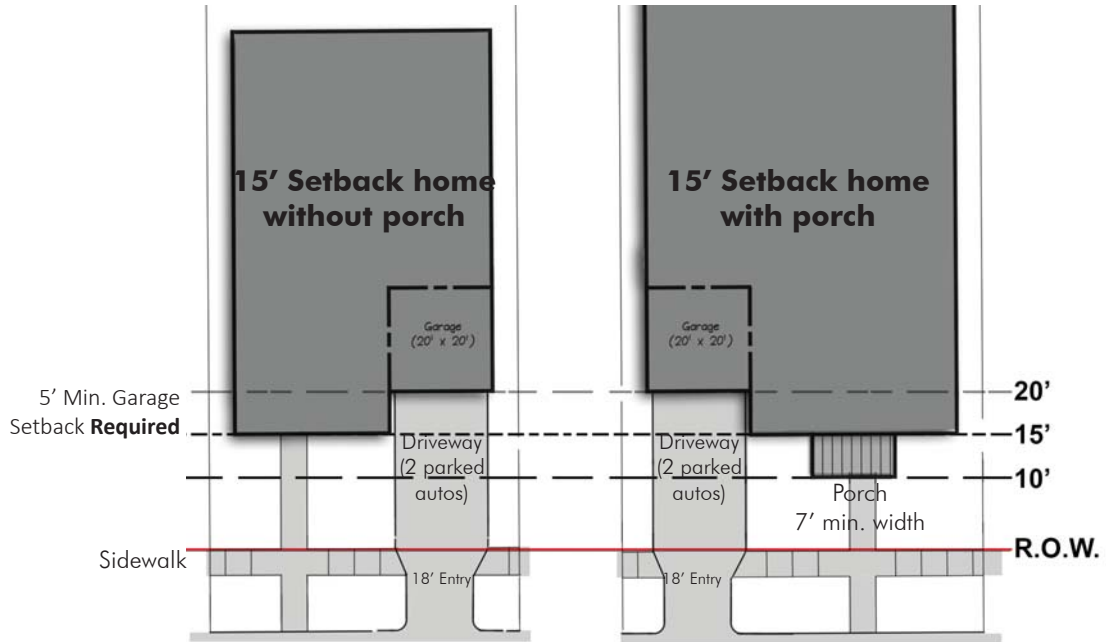
LEGEND

 Lots Requiring 100% Masonry Coverage

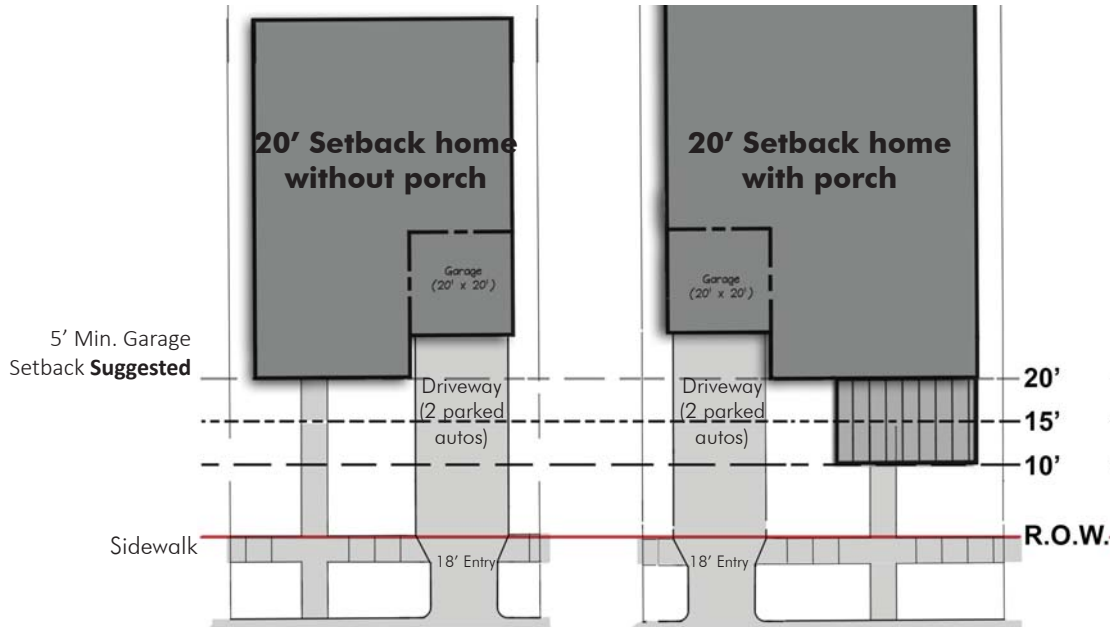
EXHIBIT B

setback diagrams

15' Front Setback



20' Front Setback



For Example:

- In the case of a 7' porch, the house would be setback 17' from the ROW to comply with the 10' setback requirement.
- Maximum porch depth is 10', all elevations and plans must be approved by the ACC.

EXHIBIT C

Recommended Plant List for Union Park

Canopy Trees:

1. *Acer barbatum* var. *Caddo*, **Caddo Maple**
2. *Acer buergerianum*, **Trident Maple**
3. *Acer grandidentatum*, **Bigtooth Maple**
4. *Acer negundo*, **Boxelder Tree or Ashleaf Maple**
5. *Carya illinoensis*, **Pecan**, select Sioux or Desirable variety
6. *Fraxinus americana*, **White Ash**
7. *Fraxinus pennsylvanica*, **Green Ash**
8. *Fraxinus pennsylvanica* var. *Urbanite*, **Urbanite Ash**
9. *Fraxinum texensis*, **Texas Ash**
10. *Ginkgo biloba*, **Ginkgo**
11. *Gleditsia triacanthus* var. *Inermis*, **Inermis Thornless Honeylocust**
12. *Gymnocladus dioicus*, **Kentucky Coffeetree**
13. *Juglans microcarpa*, **Texas Black Walnut**
14. *Koelreuteria paniculata*, **Goldenrain Tree**
15. *Pistacio chinensis*, **Chinese Pistache**
16. *Quercus acutissima*, **Sawtooth Oak**
17. *Quercus buckleyi*, **Texas Red Oak**
18. *Quercus durandii*, **Durand Oak**
19. *Quercus laceyii*, **Lacey Oak**, bluish foliage
20. *Quercus macrocarpa*, **Bur Oak**
21. *Quercus muhlenbergii*, **Chinquapin Oak**
22. *Quercus prinus*, **Chestnut Oak**
23. *Quercus shumardii*, **Shumard Red Oak**
24. *Quercus virginiana*, **Live Oak**
25. *Sapindus drummondii*, **Western Soapberry**
26. *Sideroxylon lanuginosum*, **Chittamwood**
27. *Taxodium ascendens*, **Pond Cypress**
28. *Taxodium distichum*, **Bald Cypress**
29. *Taxodium distichum* var. *Shawnee Brave*, **Shawnee Brave Bald Cypress**
30. *Ulmus alata*, **Winged Elm**
31. *Ulmus Americana* var. *Valley Forge*, **Valley Forge American Elm**, this variety is resistant to Dutch Elm Disease
32. *Ulmus crassifolia*, **Cedar Elm**
33. *Ulmus parvifolia*, **Lacebark Elm**
34. *Ulmus parvifolia* var. *Allee*, **Allee Elm**
35. *Zelkova serrata*, **Japanese Zelkova** - very drought tolerant

Accent Plants:

1. *Aesculus pavia*, **Red Buckeye**
2. *Aesculus parviflora*, **Bottlebrush Buckeye**
3. *Callicarpa americana*, **American Beautyberry**
4. *Callicarpa Americana* var. *Profusion*, **Profusion Beautyberry**
5. *Callicarpa dichotoma* var. *Early Amethyst*, **Early Amethyst Beautyberry**
6. *Carpinus betulus*, **European Hornbeam**
7. *Cephalanthus occidentalis*, **Button Bush**
8. *Cercis canadensis*, **Redbud** - full sun or understory tree

9. *Cercis canadensis* var. *Alba*, **White Redbud** – full sun or understory tree
10. *Cercis canadensis* var. *Texensis*, **Texas Redbud** – full sun or understory tree
11. *Cercis canadensis* var. *Mexicana*, **Mexican Redbud** – full sun or understory tree
12. *Cercis reniformis* var. *Oklahoma*, **Oklahoma Redbud** – full sun or understory tree
13. *Chilopsis linearis*, **Desert Willow**
14. *Chionanthus virginicus*, **White Fringe Tree**
15. *Cornus drummondii*, **Roughleaf Dogwood** – understory tree
16. *Cotinus obovatus*, **American Smoketree**
17. *Cupressus arizonica* – **Arizona Cypress**
18. *Cupressus sempervirens*, **Italian Cypress**
19. *Diospyros texana*, **Texas Persimmon**
20. *Foresteria pubescens*, **Elbow Bush**
21. *Hamamelis vernalis*, **Arkansas Witch Hazel**
22. *Hamamelis virginiana*, **Common Witch Hazel**
23. *Ilex decidua*, **Possumhaw Holly**
24. *Ilex decidua* var. *Finch's Golden*, **Finch's Golden Possumhaw Holly** – bright golden berries
25. *Ilex decidua* var. *Paco*, **Paco Possumhaw Holly** – deep orange berries
26. *Ilex decidua* var. *Warren's Red*, **Warren's Red Possumhaw Holly** – bright red berries
27. *Ilex* var. *Mary Nell*, **Mary Nell Holly**
28. *Ilex* var. *Nellie R. Steven's*, **Nellie R. Steven's Holly**
29. *Ilex vomitoria* var. *Pride of Houston*, **Pride of Houston Yaupon Holly**
30. *Ilex vomitoria* var. *Will Fleming*, **Will Fleming Yaupon Holly** – upright, 1-2' spread, no berries
31. *Juniperus ashei*, **Ash Juniper or Blueberry Juniper**
32. *Juniperus chinensis* var. *Blue Point*, **Blue Point Juniper** – blue color foliage
33. *Juniperus chinensis* var. *Spartan*, **Spartan Juniper** – more upright
34. *Juniperus virginiana*, **Eastern Red Cedar**
35. *Lagerstroemia indica* var. *Acoma*, **Acoma Crape Myrtle** – white with weeping, cascading growth habit
36. *Lagerstroemia indica* var. *Basham's Party Pink*, **Party Pink Crape Myrtle** – lavender pink
37. *Lagerstroemia indica* var. *Muskogee*, **Muskogee Crape Myrtle** – Light lavender
38. *Lagerstroemia indica* var. *Natchez*, **Natchez Crape Myrtle** – White
39. *Lagerstroemia indica* var. *Sioux*, **Sioux Crape Myrtle** – vivid pink
40. *Lagerstroemia indica* var. *Tonto*, **Tonto Crape Myrtle** – deep red
41. *Lagerstroemia indica* var. *Tuscarora*, **Tuscarora Crape Myrtle** – coral pink
42. *Lagerstroemia indica* var. *Tuskegee*, **Tuskegee Crape Myrtle** – dark pink
43. *Leucana retusa*, **Lemonball or Goldenball Lead Tree** – very drought tolerant
44. *Lindera benzoin*, **Spice Bush**
45. *Magnolia grandiflora* var. *Alta*, **Alta Magnolia** – upright and dense
46. *Magnolia grandiflora* var. *Claudia Wannamaker* – **Claudia Wannamaker Magnolia**
47. *Magnolia grandiflora* var. *Little Gem* – **Little Gem Magnolia**
48. *Magnolia stellata*, **Star Magnolia** – understory tree
49. *Magnolia soulangiana*, **Saucer Magnolia** – understory tree
50. *Pinus edulis*, **Pinion Pine**
51. *Pinus eldarica*, **Afghan Pine**
52. *Pinus nigra*, **Austrian Pine**
53. *Pinus pinea*, **Italian Stone Pine**
54. *Pinus thunbergii*, **Japanese Black Pine**
55. *Prosopis glandulosa*, **Honey Mesquite**

56. *Prunus mexicana*, **Mexican Plum**
57. *Rhamnus caroliniana*, **Carolina Buckthorn**
58. *Rhus aromatic*, **Fragrant Sumac**
59. *Rhus lanceolata*, **Prairie Flameleaf Sumac**
60. *Rhus microphylla*, **Littleleaf Sumac** – very, very drought tolerant
61. *Sophora affinis*, **Eve's Necklace**
62. *Ungnadia speciosa*, **Mexican Buckeye**
63. *Viburnum macrocephalum*, **Chinese Snowball Viburnum**
64. *Viburnum rufulum*, **Rusty Blackhaw** – good understory tree
65. *Vitex agnus-castus*, **Vitex** – purple variety
66. *Vitex agnus-castus* var. *Cooke's White*, **Cooke's White Vitex** – white variety

Shrubs:

1. *Abelia* var. *Rose Creek*, **Rose Creek Abelia**
2. *Abelia* var. *Kaleidoscope*, **Kaleidoscope Abelia**
3. *Abelia* var. *White Prostrate*, **White Prostrate Abelia**
4. *Agave* spp, **Agave**
5. *Buxus* var. *Wintergreen*, **Wintergreen Boxwood**
6. *Buxus* var. *Winter Gem*, **Winter Gem Boxwood**
7. *Ceanothus americana*, **New Jersey Tea Plant**
8. *Chaenomeles superba* var. *Texas Scarlet*, **Texas Scarlet Flowering Quince**
9. *Cotoneaster glaucophyllus*, **Gray Cotoneaster**
10. *Dalea formosa*, **Feather Dalea**
11. *Eupatorium greggii*, **Greg's Mist Flower**
12. *Hesperaloe funifera*, **Giant Red Yucca**
13. *Hesperaloe parviflora*, **False Red Yucca**
14. *Hesperaloe parviflora*, **False Yellow Yucca**
15. *Hibiscus coccineus*, **Texas Star Hibiscus**
16. *Hydrangea quercifolia*, **Oakleaf Hydrangea**
17. *Ilex vomitoria* var. *Nana*, **Dwarf Yaupon Holly**
18. *Ilex vomitoria* var. *Bordeaux*, **Bordeaux Dwarf Yaupon Holly**
19. *Lagerstroemia indica*, **Dwarf Crape Myrtle**, this plant is available in many colors and range of heights
20. *Leucophyllum frutescens*, **Texas Sage**
21. *Leucophyllum* var. *Greencloud*, **Greencloud Texas Sage**
22. *Leucophyllum* var. *Silverado Dwarf*, **Silverado Dwarf Texas Sage**
23. *Malvaviscus drummondii*, **Turk's Cap**
24. *Mimosa borealis*, **Fragrant Mimosa**
25. *Myrica pusilla*, **Dwarf Wax Myrtle**
26. *Opuntia ellisiana*, **Spineless Prickly Pear**
27. *Rhus michauxii*, **Michaux's Sumac**
28. *Rosa* var. *Belinda's Dream*, **Belinda's Dream Rose**
29. *Rosa* var. *Knockout*, **Knockout Rose**
30. *Rosa* var. *Martha Gonzalez*, **Martha Gonzalez Rose**
31. *Rosa* var. *Mutabilis*, **Mutabilis Rose**
32. *Rosmarinus officinalis*, **Rosemary**
33. *Sedum* var. *Autumn Joy*, **Autumn Joy Sedum**
34. *Spirea vanhouttei*, **Bridal Wreath Spirea**
35. *Spirea japonica* var. *Anthony Japonica*, **Anthony Spirea**

36. *Symphoricarpos chenaultii* var. Hancock, **Hancock Snowberry**
37. *Symphoricarpos orbiculatus*, **Coralberry**
38. *Yucca filamentosa* var. Color Guard, **Color Guard Yucca**
39. *Yucca gloriosa* var. Variegata, **Variegated Spanish Dagger**
40. *Yucca pallida*, **Pale Leaf Yucca**
41. *Yucca recurvifolia*, **Softleaf Yucca**
42. *Yucca rigida*, **Blue Yucca**
43. *Yucca rostrata* var. Sapphire Skies, **Sapphire Skies Yucca**
44. *Yucca rupicola*, **Twisted Leaf Yucca**
45. *Yucca treculeana*, **Texas Bayonet Yucca**

Ornamental Grasses:

1. *Carex buchananii* var. Red Rooster, **Red Rooster Sedge**
2. *Carex cherokeensis*, **Cherokee Sedge**
3. *Carex divulsa*, **Meadow Sedge**
4. *Carex oshimensis* var. Everest, **Everest Weeping Sedge**
5. *Carex oshimensis* var. Evergold, **Evergold Sedge**
6. *Carex perdentata*, **Webberville Sedge**
7. *Carex phyllocephala* var. Sparkler, **Sparkler Sedge**
8. *Chasmanthium latifolium*, **Inland Sea Oats**
9. *Cortaderia selloana* var. Pumila, **Dwarf Pampas Grass**
10. *Corynephorus canescens* var. Spiky Blue, **Spiky Blue Grass**
11. *Cyperus alternifolia*, **Umbrella Plant**
12. *Cyperus nanas*, **Compact Umbrella Plant**
13. *Dianella tasmanica* var. Variegata, **Variegated Flax Lily**
14. *Eragrostis curvula*, **Weeping Lovegrass**
15. *Eragrostis elliottii*, **Blue Lovegrass**
16. *Juncus inflexus* var. Blue Arrows, **Blue Arrows Rush**
17. *Juncus pallidus* var. Javelin, **Javelin Rush**
18. *Koeleria glauca* var. Coolio, **Coolio Blue Hair Grass**
19. *Koeleria glauca* var. Blue Sprite, **Blue Sprite Blue Hair Grass**
20. *Miscanthus sinensis* var. Adagio, **Adagio Miscanthus**
21. *Miscanthus sinensis* var. Gracillimus, **Maiden Grass**
22. *Muhlenbergia capillaris*, **Gulf Coast Muhly**
23. *Muhlenbergia capillaris* var. Lenca, **Regal Mist Pink Muhly**
24. *Muhlenbergia duboides*, **Weeping Muhly**
25. *Muhlenbergia dumosa*, **Bamboo Muhly**
26. *Muhlenbergia lindheimeri*, **Lindheimer Muhly**
27. *Panicum virgatum* var. Dallas Blues, **Dallas Blues Switchgrass**
28. *Panicum virgatum* var. Heavy Metal, **Heavy Metal Switchgrass**
29. *Schizachyrium scoparium*, **Little Bluestem**
30. *Stipa tenuissima*, **Mexican Feathergrass**

Perennials:

1. *Achillea* var. Moonshine, **Moonshine Yarrow**
2. *Anisacanthus quadrifidus wrightii*, **Flame Acanthus**
3. *Aquilegia chrysantha* var. hinkleyana, **Texas Gold Columbine**
4. *Artemisia* var. Powis Castle, **Powis Castle Artemesia**
5. *Aster oblongifolius*, **Fall Aster**

6. *Astrolepis sinuata*, **Wavy Scaly Cloakfern**
7. *Buddleia davidii*, **Butterfly Bush**
8. *Callirhoe involucrate*, **Winecup**
9. *Calyptocarpus vialis*, **Horse Herb**
10. *Chrysactinia mexicana*, **Damianita**
11. *Coreopsis lanceolata*, **Lanceleaf Coreopsis**
12. *Datura wrightii*, **Datura Jimson Weed**
13. *Dyschoriste linearis*, **Snake Herb**
14. *Echinacea purpurea*, **Purple Coneflower**
15. *Eupatorium greggii*, **Greg's Mist Flower**
16. *Gaura lindheimeri*, **Pink Gaura**
17. *Lantana horrida*, **Texas Lantana**
18. *Lavandula intermedia* var. *Provence*, **Provence Lavender**
19. *Lippia graveolens*, **Mexican Oregano**
20. *Marsilia macropoda*, **Clover Fern**
21. *Melampodium leucanthum*, **Blackfoot Daisy**
22. *Nepeta faassenii* var. *Walker's Low*, **Walker's Low Catmint**
23. *Nierembergia gracilis* var. *Starry Eyes*, **Starry Eyes Nierembergia**
24. *Oenothera missouriensis*, **Fluttermills**
25. *Penstemon tenuis*, **Brazos Penstemon**
26. *Perovskia atriplicifolia*, **Russian Sage**
27. *Physostegia virginiana*, **Fall Obedient Plant**
28. *Rosmarinus officinalis* var. *Prostratus*, **Prostrate Rosemary**
29. *Rudbeckia fulgida*, **Black-eyed Susan**
30. *Rudbeckia fulgida* var. *Goldsturm*, **Goldsturm Rudbeckia**
31. *Rudbeckia maxima*, **Giant Coneflower**
32. *Salvia chamaedryoides*, **Gray Shrub Sage**
33. *Salvia farinacea* var. *Henry Duelberg*, **Henry Duelberg Sage**
34. *Salvia gregii* var. *Autumn Sage*, **Autumn Sage Salvia**
35. *Salvia hybrid*, **Nuevo Leon Sage**
36. *Salvia longispicata* var. *Indigo Spires*, **Indigo Spires Salvia**
37. *Salvia lyrata*, **Lyre Leaf Sage**
38. *Salvia roemeriana*, **Cedar Sage**
39. *Salvia* var. *May Night*, **May Night Salvia**
40. *Santolina chamaecyparissus*, **Gray Santolina**
41. *Santolina pinnata*, **Green Santolina**
42. *Scytellaria ovate*, **Heartleaf Skullcap**
43. *Scutellaria suffrutescens*, **Pink Skullcap**
44. *Sedum* var. *Autumn Joy*, **Autumn Joy Sedum**
45. *Stachys byzantine*, **Lamb's Ear**
46. *Tetrameuris scaposa*, **Four Nerve Daisy**
47. *Thelypteris kunthii*, **Southern Wood Fern**
48. *Verbena canadensis* var. *Homestead Purple*, **Homestead Purple Verbena**
49. *Wedelia texana*, **Orange Zexmenia**

Vines and Groundcover:

1. *Bignonia capreolata* var. *Tangerine Beauty*, **Tangerine Beauty Crossvine**
2. *Campsis tagliabuana* var. *Madame Galen*, **Madame Galen Trumpet creeper**
3. *Campsis radicans* var. *Monbal*, **Balboa Sunset Trumpet creeper**
4. *Campsis radicans* var. *Flamingo*, **Flamingo Trumpet creeper**
5. *Campsis radicans* var. *Flava*, **Yellow Trumpet creeper**

6. Clematis paniculata, **Sweet Autumn Clematis**
7. Clematis var. Henryi, **Henry's Clematis**
8. Clematis var. Jackmanii, **Jackmanii Clematis**
9. Clematis var. Ramona, **Ramona Clematis**
10. Gelsemium rankinii, **Swamp Jessamine**
11. Gelsemium sempervirens, **Carolina Jessamine**
12. Ipomoea quamoclit, **Cypress Vine**
13. Ipomoea sinuate, **Alamo Vine**
14. Lonicera sempervirens, **Coral Honeysuckle**
15. Lonicera sempervirens, **Yellow Honeysuckle**
16. Mascagnia macroptera, **Butterfly Vine**
17. Mazus Reptans, **Mazus Reptans**
18. Parthenocissus quinquefolia, **Virginia Creeper**
19. Passiflora caerulea var. Blue Crown, **Blue Crown Passion Vine**
20. Passiflora incarnate cinnicata var. Incense, **Incense Passion Vine**
21. Phyla nodiflora, **Texas Frogfruit**
22. Sedum spp., **Sedum**
23. Vinca Major, **Vinca Major**
24. Vinca Minor, **Vinca Minor**
25. Wisteria frutescens, **Texas Wisteria**

Canopy Trees:



Caddo Maple



Trident Maple



Bigtooth Maple



Ashleaf Maple



Pecan



White Ash



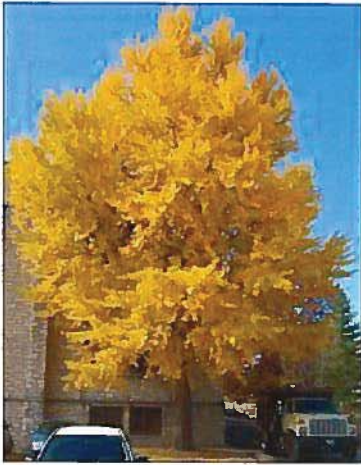
Green Ash



Urbanite Ash



Texas Ash



Ginkgo



Inermis Thornless Honeysuckle



Kentucky Coffeetree



Texas Black Walnut



Goldenrain Tree



Chinese Pistache



Sawtooth Oak



Texas Red Oak



Durand Oak



Lacey Oak



Bur Oak



Chinquapin Oak



Chestnut Oak



Shumard Red Oak



Live Oak



Western Soapberry



Chittamwood



Pond Cypress



Bald Cypress



Shawnee Brave Bald Cypress



Winged Elm



Valley Forge American Elm



Cedar Elm



Lacebark Elm



Allee Elm



Japanese Zelkova

Accent Plants:



Red Buckeye



Bottlebrush Buckeye



American Beautyberry



Profusion Beautyberry



Early Amethyst Beautyberry



European Hornbeam



Button Bush



Redbud



White Redbud



Texas Redbud



Mexican Redbud



Oklahoma Redbud



Desert Willow



White Fringe Tree



Roughleaf Dogwood



American Smoketree



Arizona Cypress



Italian Cypress



Texas Persimmon



Elbow Bush



Arkansas Witch Hazel



Common Witch Hazel



Possumhaw Holly



Finch's Gold Possumhaw Holly



Paco Possumhaw Holly



Warren's Red Possumhaw Holly



Mary Nell Holly



Nellie R. Stevens Holly



Pride of Houston Yaupon Holly



Will Fleming Yaupon Holly



Ash Juniper



Blue Point Juniper



Spartan Juniper



Eastern Red Cedar



Acoma Crape Myrtle



Party Pink Crape Myrtle



Muskogee Crape Myrtle



Natchez Crape Myrtle



Sioux Crape Myrtle



Tonto Crape Myrtle



Tuscarora Crape Myrtle



Tuskegee Crape Myrtle



Goldenball Lead Tree



Spice Bush



Alta Magnolia



Claudia Wannamaker Magnolia



Little Gem Magnolia



Star Magnolia



Saucer Magnolia



Pinion Pine



Afghan Pine



Austrian Pine



Italian Stone Pine



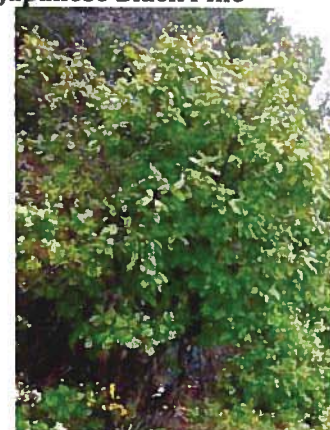
Japanese Black Pine



Honey Mesquite



Mexican Plum



Carolina Buckthorn



Fragrant Sumac



Prairie Flameleaf Sumac



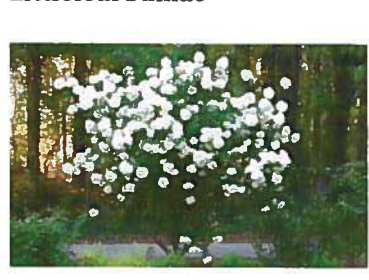
Littleleaf Sumac



Eve's Necklace



Mexican Buckeye



Chinese Snowball Viburnum



Rusty Blackhaw



Vitex



Cooke's White Vitex

Shrubs:



Rose Creek Abelia



Kaleidoscope Abelia



White Prostrate Abelia



Agave



Wintergreen Boxwood



Winter Gem Boxwood



New Jersey Tea Plant



Texas Scarlet Flowering Quince



Gray Cotoneaster



Feather Dalea



Greg's Mist Flower



Giant Red Yucca



False Red Yucca



False Yellow Yucca



Texas Star Hibiscus



Oakleaf Hydrangea



Dwarf Yaupon Holly



Bordeaux Dwarf Yaupon Holly



Dwarf Crape Myrtle



Texas Sage



Greencloud Texas Sage



Silverado Texas Sage



Turk's Cap



Fragrant Mimosa



Dwarf Wax Myrtle



Spineless Prickly Pear



Michaux's Sumac



Belinda's Dream Rose



Knockout Rose



Martha Gonzalez Rose



Mutabilis Rose



Rosemary



Autumn Joy Sedum



Bridal Wreath Spirea



Anthony Spirea



Hancock Snowberry



Coralberry



Color Guard Yucca



Variegated Spanish Dagger



Pale Leaf Yucca



Softleaf Yucca



Blue Yucca



Sapphire Skies Yucca



Twisted Leaf Yucca



Texas Bayonet Yucca

Ornamental Grasses:



Red Rooster Sedge



Cherokee Sage



Meadow Sedge



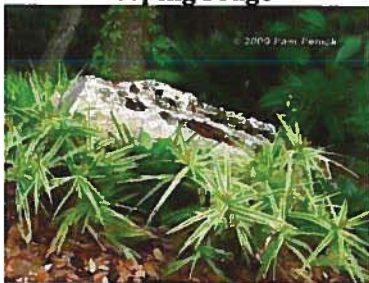
Everest Weeping Sedge



Evergold Sedge



Webberville Sedge



Sparkler Sedge



Inland Sea Oats



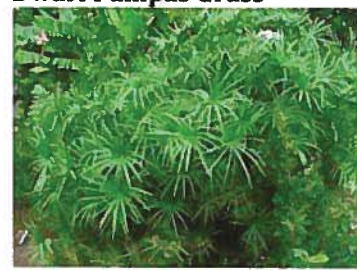
Dwarf Pampas Grass



Spiky Blue Grass



Umbrella Plant



Compact Umbrella Plan



Variegated Flax Lily



Weeping Lovegrass



Blue Lovegrass



Blue Arrows Rush



Javelin Rush



Coolio Blue Hair Grass



Blue Sprite Blue Hair Grass



Adagio Miscanthus



Maiden Grass



Gulf Coast Muhly



Regal Mist Pink Muhly



Weeping Muhly



Bamboo Muhly



Lindheimer Muhly



Dallas Blue Switchgrass



Heavy Metal Switchgrass



Little Bluestem



Mexican Feathergrass

Perennials:



Moonshine Yarrow



Flame Acanthus



Texas Gold Columbine



Powis Castle Artemesia



Fall Aster



Wavy Scale Cloakfern



Butterfly Bush



Winecup



Horse Herb



Damianita



Lanceleaf Coreopsis



Datura Jimson Weed



Snake Herb



Purple Coneflower



Greg's Mist Flower



Pink Gaura



Texas Lantana



Provence Lavender



Mexican Oregano



Clover Fern



Blackfoot Daisy



Walker's Low Catmint



Starry Eyes Nierembergia



Fluttermills



Brazos Penstemon



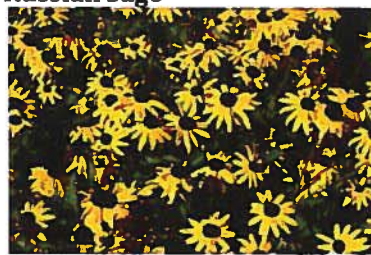
Russian Sage



Fall Obedient Plant



Prostrate Rosemary



Black-eyed Susan



Goldsturm Rudbeckia



Giant Coneflower



Gray Shrub Sage



Henry Duelberg Sage



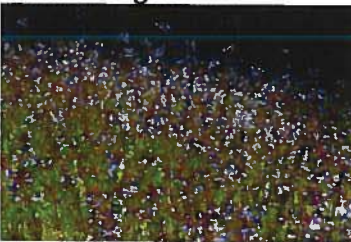
Autumn Sage Salvia



Nuevo Leon Sage



Indigo Spires Salvia



Lyre Leaf Sage



Cedar Sage



May Night Sage



Gray Santolina



Green Santolina



Heartleaf Skullcap



Pink Skullcap



Autumn Joy Sedum



Lamb's Ear



Four Nerve Daisy



Southern Wood Fern



Homestead Purple Verbena



Orange Zexmenia

Vines and Groundcover:



Tangerine Beauty Crossvine



**Madame Galen
Trumpet creeper**



**Balboa Sunset
Trumpet creeper**



Flamingo Trumpet creeper



Yellow Trumpet creeper



Sweet Autumn Clematis



Henry's Clematis



Jackmanii Clematis



Ramona Clematis



Swamp Jessamine



Carolina Jessamine



Cypress Vine



Alamo Vine



Coral Honeysuckle



Yellow Honeysuckle



Butterfly Vine



Mazus Reptans



Virginia Creeper



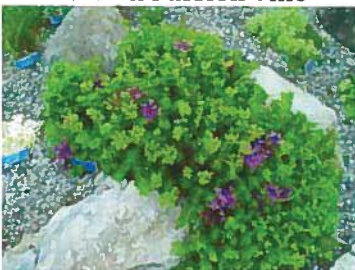
Blue Crown Passion Vine



Incense Passion Vine



Texas Frogfruit



Sedum



Vinca Major



Vinca Minor



Wisteria

EXHIBIT D

street tree spacing

Street trees not only provide shade and shelter but also play a part in a healthy streetscape. A uniform streetscape and tree planting is mandatory and critical to The Union Park development.

Decorative above ground tree rings (masonry, plastic, wood, or other material) between the street and sidewalk are prohibited.

Spacing

Builder must reference the appropriate Neighborhood Street Tree Plan to determine the approved street tree, general location, and spacing for each street. Street trees must follow the requirements below and be spaced as follows along all streets:

- 50' Lots..... 30' O.C. : 1 four inch (4") parkway street trees per lot: 40' min. from intersection
- 60' Lots..... 30' O.C. : 1 four inch (4") parkway street trees per lot: 50' min. from intersection
- 70' Lots..... 35' O.C. : 2 three and a half inch (3.5") parkway street trees per lot: 50' min. from intersection

On side streets, smaller canopy trees shall be spaced 35' O.C. with 40' min. from intersections except on 70' Lots—trees must be 50' min from intersections.



Refer to Street Tree Plan for street tree designation.

EXHIBIT E

Street Tree Planting Plan

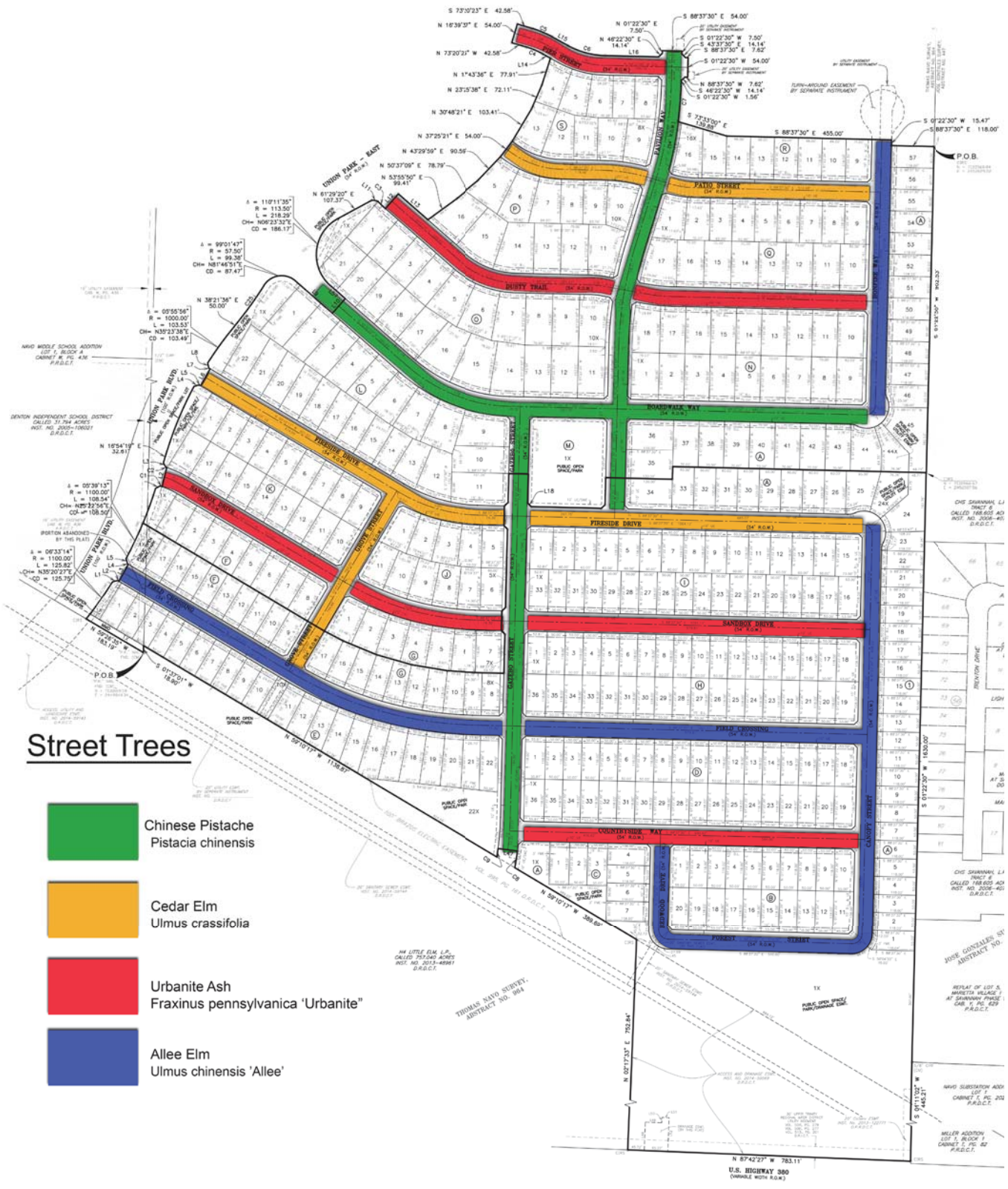


EXHIBIT F

wood fencing details

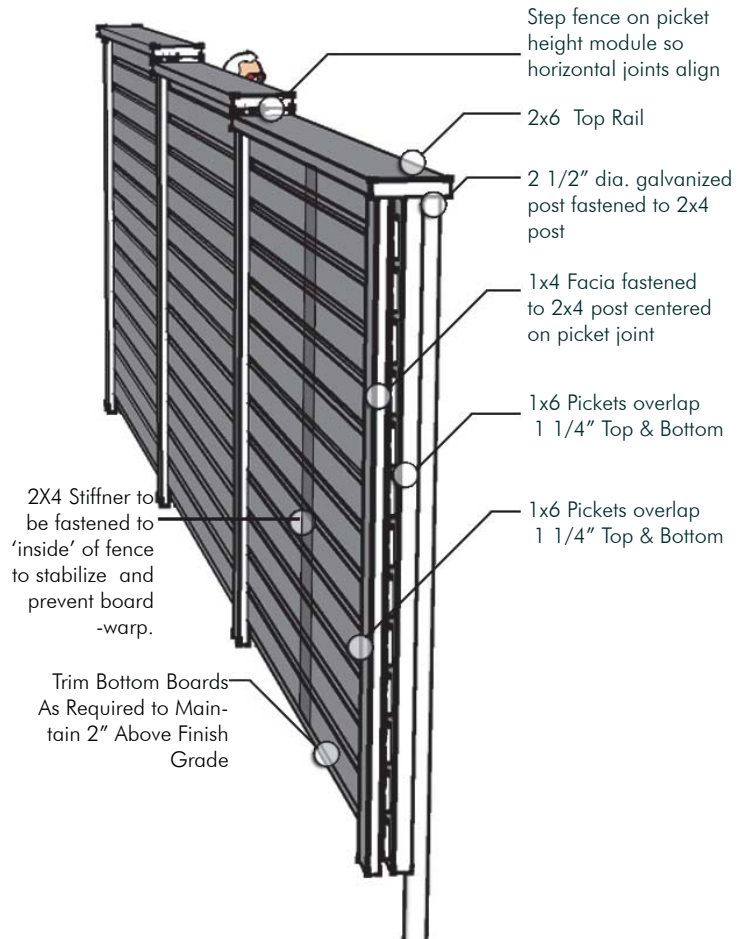
The “Union Park” Wood Fence

Fence is to be 6' height #1 grade rough cedar. **All Wood to be pre-dipped with ACE FENCING: UNION PARK GREY (call: 972-578-5775)** All connections to be galvanized, bottom picket to be field cut to slope with grade at 2" above finish grade. 2x4 cedar post @ 6' o.c. fastened to 2 1/2" galvanized post set in concrete foundation. 1x6 pickets to overlap 1 1/4" with 2x6 top rail and 1x4 fascia centered on 2x4 post. At property corners and shared corners, 2x6 posts are to be used with 1x6 fascias. Every 3' a 2x4 stiffener to be fastened on the 'inside' of the fence to prevent board-warp. Any fence facing public street or area should always show the non intermediate post or "good side" towards the street or public area.

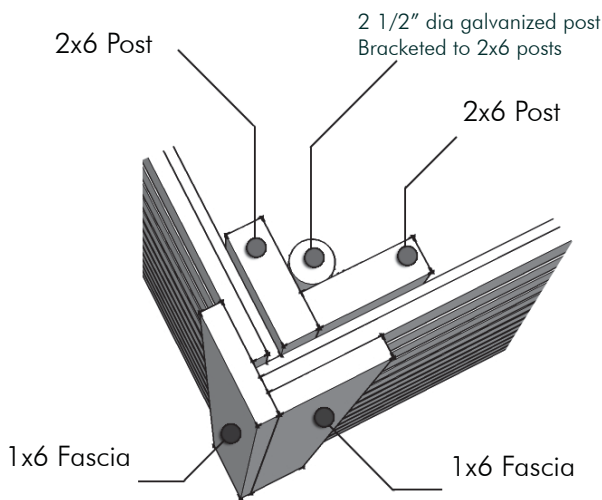
Given the horizontal nature of the fencing planks special care should be taken when joining a new fence with an existing one. Construction should always begin from the existing fence to ensure that the existing and new horizontal planks line up and create a seamless transition.

All fences shall be constructed with the finished side facing out on key lots, side lots and window lots **See Exhibit D for fencing orientation.**

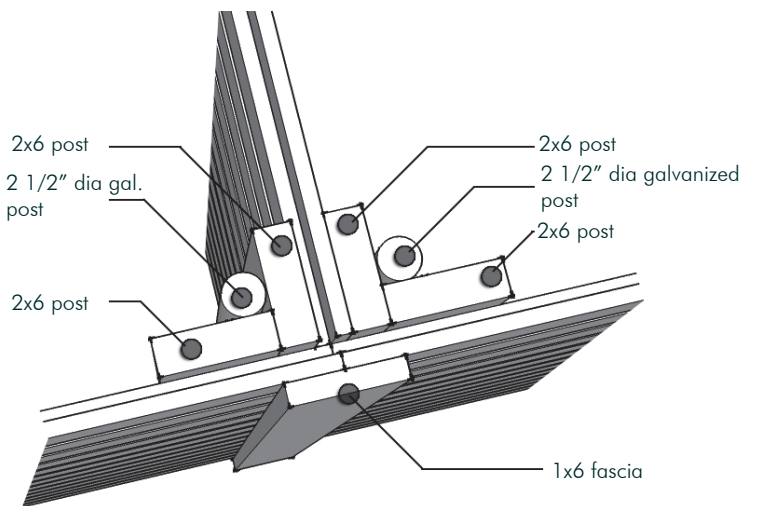
No post shall be visible from any street, alley, open space or within the community of the home being constructed



Fencing Detail and Section



Fencing Corner Detail



Fencing Top Detail For Corner at Shared

EXHIBIT G

Fence Locations & Corner Setbacks



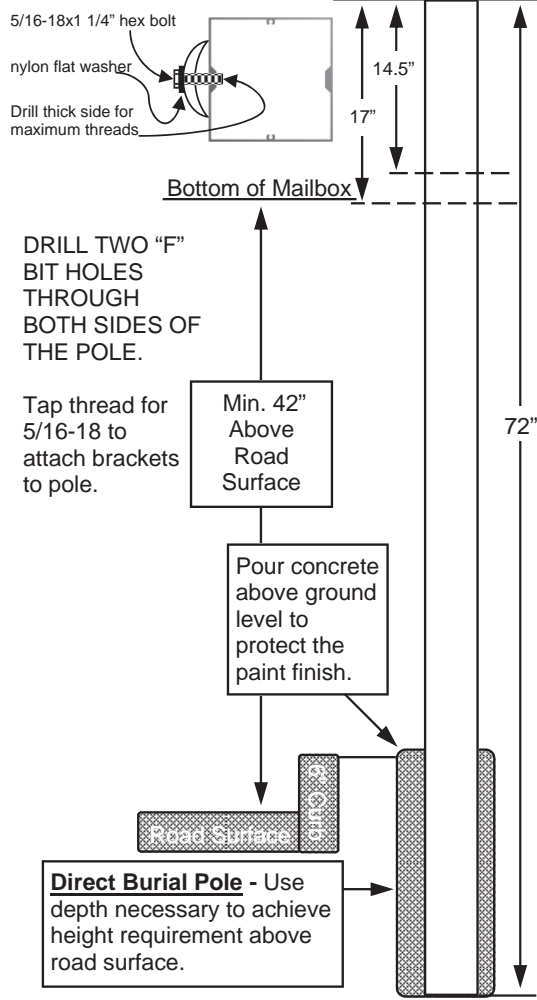
EXHIBIT H

Mailbox Spec

DEQ46-28Q1-8X

CUSTOMERS ARE REQUESTED TO CONTACT THE LOCAL POST OFFICE BEFORE ERECTING THE BOX TO ENSURE ITS CORRECT PLACEMENT AND HEIGHT AT THE STREET.

MPQ#46 - 4" SQUARE DIRECT BURIAL POLE



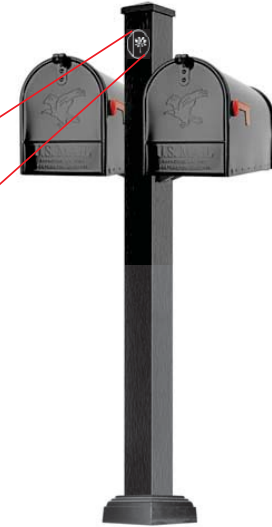
Attach Kit:

- 4 - 5/16-18X1 1/4" Hex Bolt
- 4 - Nylon Flat Washer .317ID .75OD T.062
- 4 - 1/4-20x1 1/2" phil truss bolt
- 4 - 1/4-20 keps nut
- 8 - #8 x 1" lath screw
- 1 - 5/32 hex key
- 1 - General Installation Instructions

U/P LOGO - 3.5" Dia.
White Vinyl



Located 4" from top of post to center of logo, centered on post



FINQ-E4 - End Cap Finial (for 4" square pole)

One 5/16-18x5/16" set screw to attach to pole.



(2) M8 - Mailbox

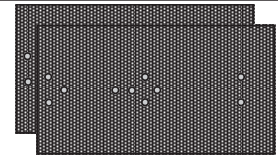
Includes Flag Kit

Mounting holes for attaching to pan



(2) PAN SG2

Use two 1/4-20x1 1/2" phil truss bolts to mount to top of bracket.
Use four #8x1" lath screw to attach mailbox through the side.



(2) DB-28 - Brackets

Two holes for mounting the pan

Two 3/8" holes to align with holes in pole



SBQ-14 - Slip Over Base

Slip over pole and rest on concrete footing to protect the finish.

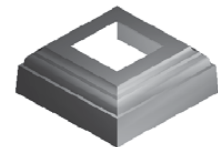


EXHIBIT I

Site Lighting Standards

Site Lighting Standards

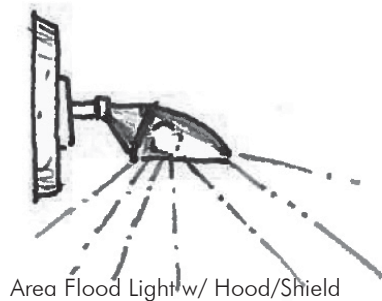
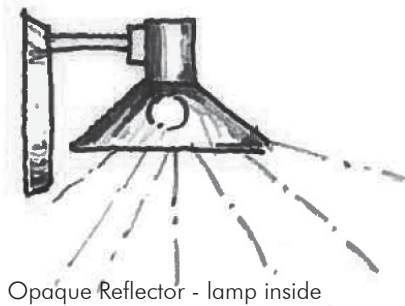
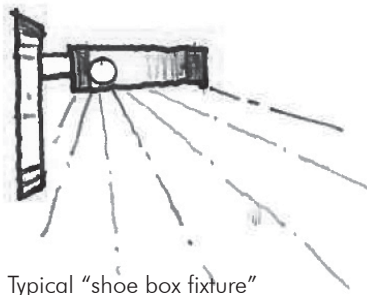
Light sources should be unobtrusive or concealed with all light in shades of white (no colored lights). No spillover of light should occur on neighboring properties and lighting must be shielded to prevent a glare. Tree lights should be concealed underground or in shrub masses. Exterior flood lights are to be directed away from neighboring homes and yards. Carriage or Coach lighting provides property security.

Two (2) Coach Lights are required on each elevation

Three (3) Coach Lights are required on a 70' Lot

Spotlights and/or floodlights cannot be mounted to the front elevation of the house (may be allowed if mounted discretely under the eave).

Permitted



Prohibited

